

GPIB

Getting Started with Your Non Plug and Play GPIB Hardware and Software for Windows 95

December 1996 Edition
Part Number 321036C-01

© Copyright 1995, 1996 National Instruments Corporation.
All Rights Reserved.

Important Information

Warranty

The AT-GPIB/TNT and EISA-GPIB hardware is warranted against defects in materials and workmanship for a period of two years from the date of shipment, as evidenced by receipts or other documentation. National Instruments will, at its option, repair or replace equipment that proves to be defective during the warranty period. This warranty includes parts and labor.

The media on which you receive National Instruments software are warranted not to fail to execute programming instructions, due to defects in materials and workmanship, for a period of 90 days from date of shipment, as evidenced by receipts or other documentation. National Instruments will, at its option, repair or replace software media that do not execute programming instructions if National Instruments receives notice of such defects during the warranty period. National Instruments does not warrant that the operation of the software shall be uninterrupted or error free.

A Return Material Authorization (RMA) number must be obtained from the factory and clearly marked on the outside of the package before any equipment will be accepted for warranty work. National Instruments will pay the shipping costs of returning to the owner parts which are covered by warranty.

National Instruments believes that the information in this manual is accurate. The document has been carefully reviewed for technical accuracy. In the event that technical or typographical errors exist, National Instruments reserves the right to make changes to subsequent editions of this document without prior notice to holders of this edition. The reader should consult National Instruments if errors are suspected. In no event shall National Instruments be liable for any damages arising out of or related to this document or the information contained in it.

EXCEPT AS SPECIFIED HEREIN, NATIONAL INSTRUMENTS MAKES NO WARRANTIES, EXPRESS OR IMPLIED, AND SPECIFICALLY DISCLAIMS ANY WARRANTY OF MERCHANTABILITY OR FITNESS FOR A PARTICULAR PURPOSE. CUSTOMER'S RIGHT TO RECOVER DAMAGES CAUSED BY FAULT OR NEGLIGENCE ON THE PART OF NATIONAL INSTRUMENTS SHALL BE LIMITED TO THE AMOUNT THEREFORE PAID BY THE CUSTOMER. NATIONAL INSTRUMENTS WILL NOT BE LIABLE FOR DAMAGES RESULTING FROM LOSS OF DATA, PROFITS, USE OF PRODUCTS, OR INCIDENTAL OR CONSEQUENTIAL DAMAGES, EVEN IF ADVISED OF THE POSSIBILITY THEREOF. This limitation of the liability of National Instruments will apply regardless of the form of action, whether in contract or tort, including negligence. Any action against National Instruments must be brought within one year after the cause of action accrues. National Instruments shall not be liable for any delay in performance due to causes beyond its reasonable control. The warranty provided herein does not cover damages, defects, malfunctions, or service failures caused by owner's failure to follow the National Instruments installation, operation, or maintenance instructions; owner's modification of the product; owner's abuse, misuse, or negligent acts; and power failure or surges, fire, flood, accident, actions of third parties, or other events outside reasonable control.

Copyright

Under the copyright laws, this publication may not be reproduced or transmitted in any form, electronic or mechanical, including photocopying, recording, storing in an information retrieval system, or translating, in whole or in part, without the prior written consent of National Instruments Corporation.

Trademarks

LabVIEW®, NI-488®, Turbo488®, HS488™, NI-488.2™, NI-488.2M™, and TNT4882™ are trademarks of National Instruments Corporation.

Product and company names listed are trademarks or trade names of their respective companies.

WARNING REGARDING MEDICAL AND CLINICAL USE OF NATIONAL INSTRUMENTS PRODUCTS

National Instruments products are not designed with components and testing intended to ensure a level of reliability suitable for use in treatment and diagnosis of humans. Applications of National Instruments products involving medical or clinical treatment can create a potential for accidental injury caused by product failure, or by errors on the part of the user or application designer. Any use or application of National Instruments products for or involving medical or clinical treatment must be performed by properly trained and qualified medical personnel, and all traditional medical safeguards, equipment, and procedures that are appropriate in the particular situation to prevent serious injury or death should always continue to be used when National Instruments products are being used. National Instruments products are NOT intended to be a substitute for any form of established process, procedure, or equipment used to monitor or safeguard human health and safety in medical or clinical treatment.



Internet Support

support@natinst.com

E-mail: info@natinst.com

FTP Site: ftp.natinst.com

Web Address: <http://www.natinst.com>



Bulletin Board Support

BBS United States: (512) 794-5422

BBS United Kingdom: 01635 551422

BBS France: 01 48 65 15 59



Fax-on-Demand Support

(512) 418-1111



Telephone Support (U.S.)

Tel: (512) 795-8248

Fax: (512) 794-5678



International Offices

Australia 02 9874 4100, Austria 0662 45 79 90 0, Belgium 02 757 00 20,
Canada (Ontario) 905 785 0085, Canada (Québec) 514 694 8521, Denmark 45 76 26 00,
Finland 09 527 2321, France 01 48 14 24 24, Germany 089 741 31 30,
Hong Kong 2645 3186, Israel 03 5734815, Italy 02 413091, Japan 03 5472 2970,
Korea 02 596 7456, Mexico 5 520 2635, Netherlands 0348 433466,
Norway 32 84 84 00, Singapore 2265886, Spain 91 640 0085, Sweden 08 730 49 70,
Switzerland 056 200 51 51, Taiwan 02 377 1200, U.K. 01635 523545

National Instruments Corporate Headquarters

6504 Bridge Point Parkway Austin, TX 78730-5039 Tel: (512) 794-0100

FCC/DOC Radio Frequency Interference Class B Compliance

This equipment generates and uses radio frequency energy and, if not installed and used in strict accordance with the instructions in this manual, may cause interference to radio and television reception. Classification requirements are the same for the Federal Communications Commission (FCC) and the Canadian Department of Communications (DOC). This equipment has been tested and found to comply with the following two regulatory agencies:

Federal Communications Commission

This equipment has been tested and found to comply with the limits for a Class B digital device, pursuant to part 15 of the FCC Rules. These limits are designed to provide reasonable protection against harmful interference in a residential installation. This equipment generates, uses and can radiate radio frequency energy and, if not installed and used in accordance with the instructions, may cause harmful interference to radio communications. However, there is no guarantee that interference will not occur in a particular installation. If this equipment does cause harmful interference to radio or television reception, which can be determined by turning the equipment off and on, the user is encouraged to try to correct the interference by one or more of the following measures:

- Reorient or relocate the receiving antenna.
- Increase the separation between the equipment and receiver.
- Connect the equipment into an outlet on a circuit different from that to which the receiver is connected.
- Consult the dealer or an experienced radio/TV technician for help.

Notices to User: *Changes or modifications not expressly approved by National Instruments could void the user's authority to operate the equipment under the FCC Rules.*

This device complies with the FCC rules only if used with shielded interface cables of suitable quality and construction. National Instruments used such cables to test this device and provides them for sale to the user. The use of inferior or nonshielded interface cables could void the user's authority to operate the equipment under the FCC rules.

If necessary, consult National Instruments or an experienced radio/television technician for additional suggestions. The following booklet prepared by the FCC may also be helpful: *Interference to Home Electronic Entertainment Equipment Handbook*. This booklet is available from the U.S. Government Printing Office, Washington, DC 20402.

Canadian Department of Communications

This Class B digital apparatus meets all requirements of the Canadian Interference-Causing Equipment Regulations.

Cet appareil numérique de la classe B respecte toutes les exigences du Règlement sur le matériel brouilleur du Canada.



*Table
of
Contents*

About This Manual

How to Use the Manual Set	ix
Organization of This Manual	x
Conventions Used in This Manual	xi
Related Documentation	xii
Customer Communication	xii

Chapter 1 Introduction

How to Use This Manual	1-1
What You Need to Get Started	1-2
Optional Equipment	1-2
Non Plug and Play GPIB Hardware Overview	1-2
NI-488.2M Software Overview	1-3
Optional Programming Tools	1-4

Chapter 2 Installation and Configuration

Install the GPIB Software	2-1
Install the Non Plug and Play GPIB Hardware	2-3
AT-GPIB/TNT Hardware Installation	2-3
Identify Resources for the AT-GPIB/TNT	2-3
Configure the AT-GPIB/TNT	2-6
Configure the AT-GPIB/TNT Input/Output Range	2-8
Configure the AT-GPIB/TNT Interrupt Request	2-10
Configure the AT-GPIB/TNT Direct Memory Access	2-12

Setting the AT-GPIB/TNT Shield Ground Configuration	2-13
Install the AT-GPIB/TNT	2-14
EISA-GPIB Hardware Installation.....	2-16
Identify Resources for the EISA-GPIB	2-16
Install the EISA-GPIB	2-16
Configure the NI-488.2M Software	2-18

Chapter 3

Verify the Installation

Chapter 4

Begin to Use the GPIB Software

Introduction to the Win32 Interactive Control Utility.....	4-1
Introduction to the GPIB Spy Utility	4-2
Running Existing DOS GPIB Applications	4-2
General Programming Considerations	4-3

Appendix A

Uninstalling the Hardware and Software

Uninstalling the Hardware	A-1
Uninstalling the Software.....	A-2

Appendix B

Forcing Windows 95 to Detect the EISA-GPIB

Appendix C

Troubleshooting and Common Questions

Troubleshooting EDVR Error Conditions.....	C-1
EDVR Error Condition with ibcntl Set to 0xE028002C	C-1
EDVR Error Condition with ibcntl Set to 0xE0140025.....	C-1
EDVR Error Condition with ibcntl Set to 0xE0140035.....	C-1
EDVR Error Condition with ibcntl Set to 0xE0320029 or 0xE1050029.....	C-2
EDVR Error Condition with ibcntl Set to 0xE0140004.....	C-2

EDVR Error Condition with ibcntl Set to 0xE1030043	C-2
Troubleshooting Device Manager Problems	C-2
No National Instruments GPIB Interfaces Item	C-3
Missing GPIB Interface	C-3
GPIB Interface Not Working Properly	C-3
Removing System-Reserved Resources	C-4
Troubleshooting Diagnostic Utility Failures	C-5
Missing Software Components	C-5
No Properly Configured GPIB Interfaces Found	C-5
GPIB Cables Need To Be Disconnected	C-6
Address Resource Conflict	C-6
Interrupt Resource Conflict	C-6
DMA Resource Conflict	C-7
Single-Cycle DMA Required	C-7
GPIB Software Problem Encountered	C-8
Unknown Problem Encountered	C-8
Common Questions	C-8

Appendix D Specifications

Hardware Characteristics	D-1
Software Transfer Rates	D-2

Appendix E Customer Communication

Glossary

Figures

Figure 2-1. Add/Remove Programs Properties Dialog Box	2-1
Figure 2-2. GPIB Software Setup Screen	2-2
Figure 2-3. Add New Hardware Wizard Hardware Selection	2-4
Figure 2-4. AT-GPIB/TNT Resources Assigned Successfully	2-4
Figure 2-5. AT-GPIB/TNT Resources Not Assigned Successfully	2-5
Figure 2-6. AT-GPIB/TNT Resources Settings	2-6
Figure 2-7. AT-GPIB/TNT Parts Locator Diagram	2-7
Figure 2-8. AT-GPIB/TNT Base I/O Address Switch Settings	2-10

Figure 2-9. AT-GPIB/TNT Interrupt Jumper Setting for IRQ11 (Default Setting)	2-11
Figure 2-10. AT-GPIB/TNT Interrupt Jumper Setting for IRQ5	2-11
Figure 2-11. AT-GPIB/TNT DMA Jumper Setting for DMA Channel 7	2-13
Figure 2-12. AT-GPIB/TNT DMA Jumper Setting for No DMA Channel.....	2-13
Figure 2-13. AT-GPIB/TNT Ground Configuration Jumper Settings.....	2-14
Figure 2-14. Installing the AT-GPIB/TNT.....	2-15
Figure 2-15. GPIB Interface That Is Working Properly	2-18
Figure 2-16. GPIB Interface That Is Not Working Properly	2-18
Figure 2-17. NI-488.2M Settings Page for the AT-GPIB/TNT.....	2-19
Figure 2-18. Device Templates Page for the Logical Device Templates	2-20
Figure 3-1. Diagnostic Utility after Testing	3-1
Figure A-1. Selecting an Interface to Remove	A-2
Figure A-2. Add/Remove Programs Properties Dialog Box	A-3
Figure A-3. Uninstallation Results	A-4
Figure C-1. GPIB Interface That Is Not Working Properly	C-3

Tables

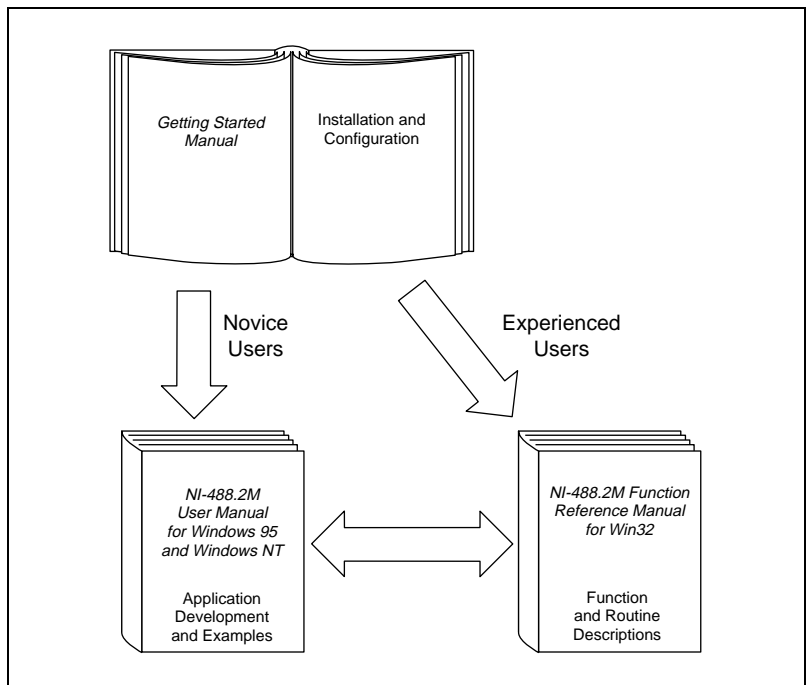
Table 2-1. Possible Base I/O Address Switch Settings	2-8
Table 2-2. AT-GPIB/TNT DMA Channel Settings.....	2-12
Table D-1. AT-GPIB/TNT Hardware Characteristics.....	D-1
Table D-2. EISA-GPIB Hardware Characteristics.....	D-2
Table D-3. NI-488.2M Software Transfer Rates for the AT-GPIB/TNT.....	D-2
Table D-4. NI-488.2M Software Transfer Rates for the EISA-GPIB	D-3

**About
This
Manual**

This manual contains instructions to help you install and configure the National Instruments Non Plug and Play GPIB hardware and software for Windows 95. The Non Plug and Play GPIB hardware includes the AT-GPIB/TNT and the EISA-GPIB.

This manual assumes that you are already familiar with Windows 95.

How to Use the Manual Set



Use this getting started manual to install and configure your Non Plug and Play GPIB hardware and software for Windows 95.

Use the *NI-488.2M User Manual for Windows 95 and Windows NT* to learn the basics of GPIB and how to develop an application program. The user manual also contains debugging information and detailed examples.

Use the *NI-488.2M Function Reference Manual for Win32* for specific NI-488 function and NI-488.2 routine information, such as format, parameters, and possible errors.

Organization of This Manual

This manual is organized as follows:

- Chapter 1, *Introduction*, explains how to use this manual, lists what you need to get started and optional equipment you can order, and briefly describes the Non Plug and Play GPIB hardware and software for Windows 95.
- Chapter 2, *Installation and Configuration*, describes how to install and configure the Non Plug and Play GPIB hardware and software for Windows 95.
- Chapter 3, *Verify the Installation*, describes how to verify the hardware and software installation.
- Chapter 4, *Begin to Use the GPIB Software*, helps you get started with the NI-488.2M software for Windows 95.
- Appendix A, *Uninstalling the Hardware and Software*, describes how to uninstall the Non Plug and Play GPIB hardware and software from Windows 95.
- Appendix B, *Forcing Windows 95 to Detect the EISA-GPIB*, contains instructions to help you install your EISA-GPIB if Windows 95 has not detected it properly.
- Appendix C, *Troubleshooting and Common Questions*, describes how to troubleshoot problems and answers some common questions.
- Appendix D, *Specifications*, describes the physical characteristics of the Non Plug and Play GPIB hardware and the transfer rates of the NI-488.2M software, along with the recommended operating conditions.
- Appendix E, *Customer Communication*, contains forms you can use to request help from National Instruments or to comment on our products and manuals.

- The *Glossary* contains an alphabetical list and a description of terms used in this manual, including abbreviations, acronyms, metric prefixes, mnemonics, and symbols.

Conventions Used in This Manual

The following conventions are used in this manual.

»	The » symbol leads you through nested menu items and dialog box options to a final action. The sequence File»Page Setup»Options»Substitute Fonts directs you to pull down the File menu, select the Page Setup item, select Options , and finally select the Substitute Fonts options from the last dialog box.
bold	Bold text denotes the names of menus, menu items, dialog boxes, dialog box buttons or options.
<i>bold italic</i>	Bold italic text denotes a note, caution, or warning.
IEEE 488 and IEEE 488.2	<i>IEEE 488</i> and <i>IEEE 488.2</i> refer to the ANSI/IEEE Standard 488.1-1987 and the ANSI/IEEE Standard 488.2-1992, respectively, which define the GPIB.
<i>italic</i>	Italic text denotes emphasis, a cross reference, or an introduction to a key concept.
<i>italic monospace</i>	Italic text in this font denotes that you must supply the appropriate words or values in place of these items.
monospace	Text in this font denotes text or characters that you should literally enter from the keyboard, sections of code, programming examples, and syntax examples. This font is also used for the proper names of disk drives, directories, programs, subprograms, subroutines, device names, functions, variables, field names, and filenames.
Non Plug and Play GPIB Hardware	<i>Non Plug and Play GPIB Hardware</i> refers to the AT-GPIB/TNT and the EISA-GPIB, in cases where the material applies to both boards.
	The Glossary lists abbreviations, acronyms, metric prefixes, mnemonics, symbols, and terms.

Related Documentation

The following documents contain information that you may find helpful as you read this manual.

- ANSI/IEEE Standard 488.1-1987, *IEEE Standard Digital Interface for Programmable Instrumentation*
- ANSI/IEEE Standard 488.2-1992, *IEEE Standard Codes, Formats, Protocols, and Common Commands*
- *Microsoft Windows 95 Online Help*, Microsoft Corporation

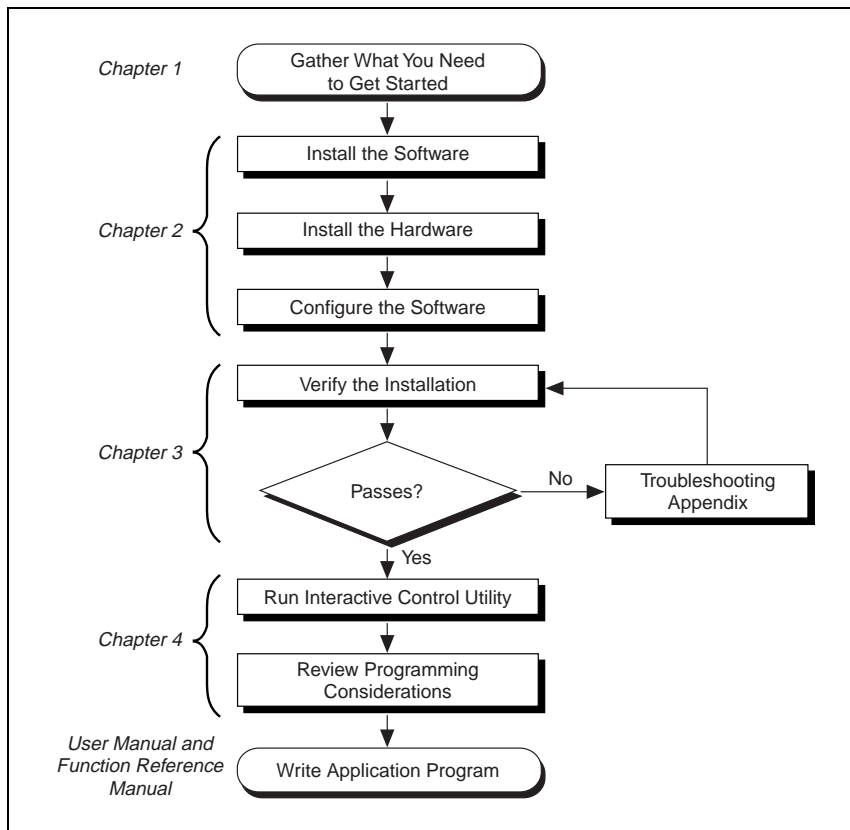
Customer Communication

National Instruments wants to receive your comments on our products and manuals. We are interested in the applications you develop with our products, and we want to help if you have problems with them. To make it easy for you to contact us, this manual contains comment and configuration forms for you to complete. These forms are in Appendix E, *Customer Communication*, at the end of this manual.

Introduction

This chapter explains how to use this manual, lists what you need to get started and optional equipment you can order, and briefly describes the Non Plug and Play GPIB hardware and software for Windows 95.

How to Use This Manual



What You Need to Get Started

Make sure you have all of the following items before you attempt to install the hardware and software:

- Windows 95 installed on your computer
- One of the following Non Plug and Play GPIB interfaces:
 - AT-GPIB/TNT
 - EISA-GPIB
- The following 3.5 in., high density (1.44 MB) disks, which come in your kit:
 - GPIB Software for Windows 95 (Setup Disk)*
 - GPIB Software for Windows 95 (NI-488.2M Software)*
- GPIB cables—single-shielded or double-shielded, Type X1, X2, or X5, which you can order from National Instruments

Optional Equipment

Call National Instruments for more information about the following optional equipment:

- Serial or parallel bus extender and cables
- Bus expander/isolator
- GPIB mechanical switch

Non Plug and Play GPIB Hardware Overview

National Instruments Non Plug and Play GPIB hardware includes the following interfaces:

AT-GPIB/TNT
EISA-GPIB

The Non Plug and Play GPIB hardware transforms your computer into a full-functioning GPIB Talker/Listener/Controller. The TNT4882C chip on each board combines the circuitry of the NAT4882 ASIC, the Turbo488 ASIC, and GPIB transceivers to create a single-chip

IEEE 488.2 interface. The TNT4882C also implements the HS488 high-speed protocol, which increases the maximum data transfer rate to up to 5.3 Mbytes/s, depending on the computer and the system configuration. For more information about transfer rates, refer to Appendix D, *Specifications*, in this manual. For more information about HS488, refer to Chapter 7, *GPIB Programming Techniques*, in the *NI-488.2M User Manual for Windows 95 and Windows NT*.

The Non Plug and Play GPIB hardware contains one GPIB load. You can connect up to 14 instruments to one of these interfaces. If you want to use more than 14 instruments, you can order a bus extender or expander from National Instruments. Refer to Appendix D, *Specifications*, for more information about the hardware specifications and recommended operating conditions.

NI-488.2M Software Overview

The NI-488.2M software includes a native, 32-bit multitasking Windows 95 driver that is fully Plug and Play aware. Because the AT-GPIB/TNT and EISA-GPIB are Non Plug and Play boards, Windows 95 is unable to detect their addition to or removal from your system dynamically. You must manually inform Windows 95 about the insertion or removal of the AT-GPIB/TNT from your system. The EISA-GPIB does not contain any DIP switches to configure its resources, so you must insert the board and configure its resources by running the EISA configuration utility that came with your computer. Then, when you restart your computer, Windows 95 automatically detects the presence of the EISA-GPIB hardware. This manual fully describes the insertion and removal procedures for each type of Non Plug and Play GPIB hardware.

The NI-488.2M software for Windows 95 supports the concurrent use of multiple types of GPIB hardware. For example, you can communicate with GPIB devices through both an AT-GPIB/TNT and a EISA-GPIB in the same system at the same time. The NI-488.2M software is fully integrated into the Windows 95 operating system. It is configurable through the System applet and uninstallable through the Add/Remove Programs applet of the Control Panel.

The NI-488.2M software, along with the Non Plug and Play GPIB hardware, transforms a general-purpose PC into a GPIB Talker/Listener/Controller with complete communications and bus management capability. The NI-488.2M software includes the following components:

- Device driver
- Diagnostic test utility
- Configuration utility
- Interactive control program
- Utilities for software development
- Language interface libraries for Microsoft Visual C/C++ 2.0 or higher, Borland C/C++ 4.0 or higher, and Microsoft Visual Basic 4.0 or higher
- Example programs that use NI-488 functions and NI-488.2 routines

Refer to Appendix D, *Specifications*, for information about the NI-488.2M software transfer rates.

Optional Programming Tools

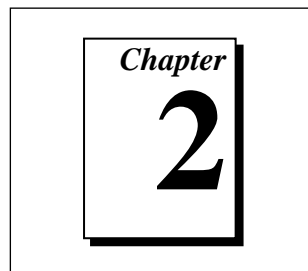
Your kit includes the NI-488.2M software for Windows 95. In addition, you can order the LabWindows[®]/CVI or LabVIEW software from National Instruments. LabWindows/CVI and LabVIEW include instrument driver libraries that make it easier to communicate with your GPIB instruments.

LabWindows/CVI is an interactive ANSI C development environment for building test and measurement and instrument control systems. It includes interactive code-generation tools and a graphical editor for building custom user interfaces. It also includes built-in libraries for IEEE 488.2, VXI, RS-232 control, and plug-in data acquisition. When you order LabWindows/CVI, you also get more than 300 complete instrument drivers, which are modular, source-code programs that handle the communication with your instrument so that you do not have to learn the programming details.

LabVIEW is a complete programming environment that departs from the sequential nature of traditional programming languages and features a graphical programming environment. It includes all the tools needed for instrument control, data acquisition, analysis, and presentation. LabVIEW also includes an extensive instrument driver library.

For more information about LabWindows/CVI and LabVIEW, contact National Instruments.

Installation and Configuration



This chapter describes how to install and configure the Non Plug and Play GPIB hardware and software for Windows 95.

Install the GPIB Software

Before installing the hardware, complete the following steps to install the GPIB software for Windows 95:

1. Select **Start»Settings»Control Panel**.
2. Double-click on the **Add/Remove Programs** icon in the Control Panel to launch the Add/Remove Programs applet. A dialog box similar to the one in Figure 2-1 appears.



Figure 2-1. Add/Remove Programs Properties Dialog Box

You can use this same applet to uninstall the GPIB software at a later time. Refer to Appendix A, *Uninstalling the Hardware and Software*, for more information.

3. Click on the **Install...** button.
4. Insert the *GPIB Software for Windows 95 (Setup Disk)*, and click on the **Next** button to proceed.
5. The software installation wizard begins with the screen shown in Figure 2-2. Click on the first option. The second option does not apply to the software for the Non Plug and Play GPIB hardware.

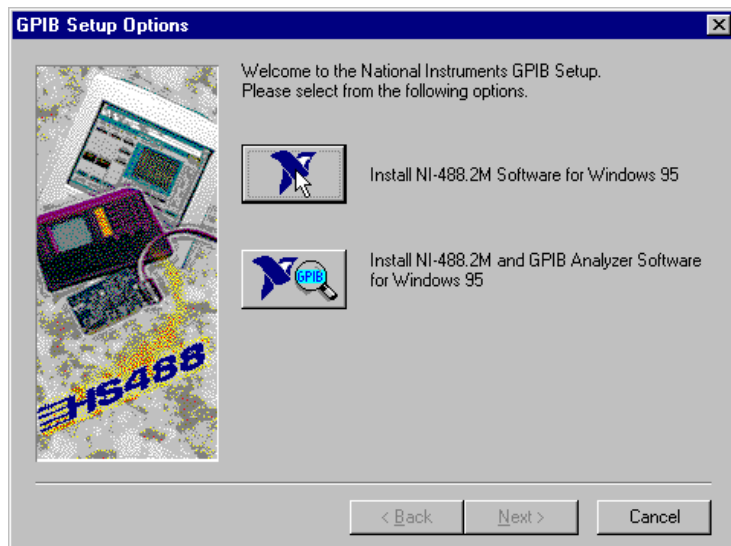


Figure 2-2. GPIB Software Setup Screen

The setup wizard guides you through the necessary steps to install the GPIB software. You may go back and change values where appropriate by clicking on the **Back** button. You can exit the setup where appropriate by clicking on the **Cancel** button.

6. When the setup is complete, restart Windows 95.

Install the Non Plug and Play GPIB Hardware

This section describes how to install your Non Plug and Play GPIB hardware. Refer to the section that describes the installation for your particular board.

If you have previously installed the GPIB Compatibility Release for Windows 95, you should remove any system-reserved resources for your AT-GPIB/TNT. System-reserved resources are only acquired manually. If you did not use the Device Manager to acquire system-reserved resources, you do not need to use the Device Manager to remove such resources. If you do need to remove system-reserved resources, refer to the *Removing System-Reserved Resources* section of Appendix C, *Troubleshooting and Common Questions*.

AT-GPIB/TNT Hardware Installation

Identify Resources for the AT-GPIB/TNT

Before installing the AT-GPIB/TNT, use the **Add New Hardware Wizard** to inform Windows 95 about the new hardware you are about to install in your system.

1. Select **Start»Settings»Control Panel**.
2. Launch the **Add New Hardware Wizard** by double-clicking the **Add New Hardware** icon.
3. Click on the **Next** button in the first **Add New Hardware Wizard** dialog box.
4. In the next **Add New Hardware Wizard** dialog box, you must check **No** instead of **Yes (Recommended)**. Because the AT-GPIB/TNT is a legacy board, Windows 95 is unable to detect its presence. Click on the **Next** button to continue.
5. The next **Add New Hardware Wizard** dialog box lets you select the type of hardware you want to install. Select the **Other Devices** item, as shown in Figure 2-3. You may select the **National Instruments GPIB Interfaces** item instead, if it appears in the dialog box. Click on the **Next** button to continue.



Figure 2-3. Add New Hardware Wizard Hardware Selection

6. The next **Add New Hardware Wizard** dialog box lets you select the manufacturer and model of your hardware. **Select National Instruments** as the manufacturer and **AT-GPIB/TNT** as the model, and click on the **Next** button to continue. Windows 95 attempts to assign nonconflicting resources to the AT-GPIB/TNT.

If Windows 95 is able to assign resources successfully, the next **Add New Hardware Wizard** dialog box describes the resources assigned to the AT-GPIB/TNT, as shown in the example dialog box in Figure 2-4. Skip to Step 7 to proceed.



Figure 2-4. AT-GPIB/TNT Resources Assigned Successfully

If Windows 95 is unable to assign resources successfully, the next **Add New Hardware Wizard** dialog box explains the problem, as shown in the example dialog box in Figure 2-5.



Figure 2-5. AT-GPIB/TNT Resources Not Assigned Successfully

In this case, click on the **Next** button to continue, then click on **Start Conflict Troubleshooter** to let Windows 95 help you determine how to resolve the conflicts that are preventing it from assigning resources. Follow all of the steps recommended by the Conflict Troubleshooter help.

When you reach the step of looking for nonconflicting resources for the AT-GPIB/TNT, you need to change the **Setting based on:** selection on the **Resources** page of the **AT-GPIB/TNT Properties** dialog box to a configuration other than **Basic configuration 0** or **Basic configuration 1**, as shown in Figure 2-6.

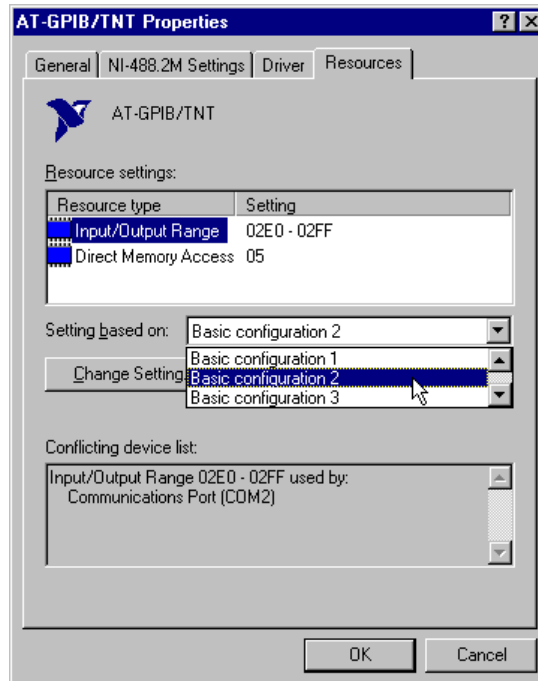


Figure 2-6. AT-GPIB/TNT Resources Settings

Continue following the instructions provided by the Conflict Troubleshooter to resolve the conflicts.

7. Write down the conflict-free resources that Windows 95 assigned to the AT-GPIB/TNT.
8. Select **Shut Down...** from the **Start** menu. In the **Shut Down Windows** dialog box, select the **Shut down the computer?** option and click on the **Yes** button.

Configure the AT-GPIB/TNT



Warning:

Electrostatic discharge can damage several components on the AT-GPIB/TNT. To avoid such damage in handling the board, touch the antistatic plastic package to a metal part of your computer chassis before removing the board from the package.

Configure the AT-GPIB/TNT jumpers and switches to match the resources assigned to it by Windows 95. If the resources assigned to it match the default settings, you are ready to install the AT-GPIB/TNT. The default settings are:

- Input/Output Range: 2C0-2DF
- Direct Memory Access: 5
- Interrupt Request: 11

If the resources do not match the default settings, you must reconfigure the jumpers and switches, as described in the next few sections, to match the resources assigned to the AT-GPIB/TNT by Windows 95. Figure 2-7 shows the location of the configuration jumpers and switches on the AT-GPIB/TNT.

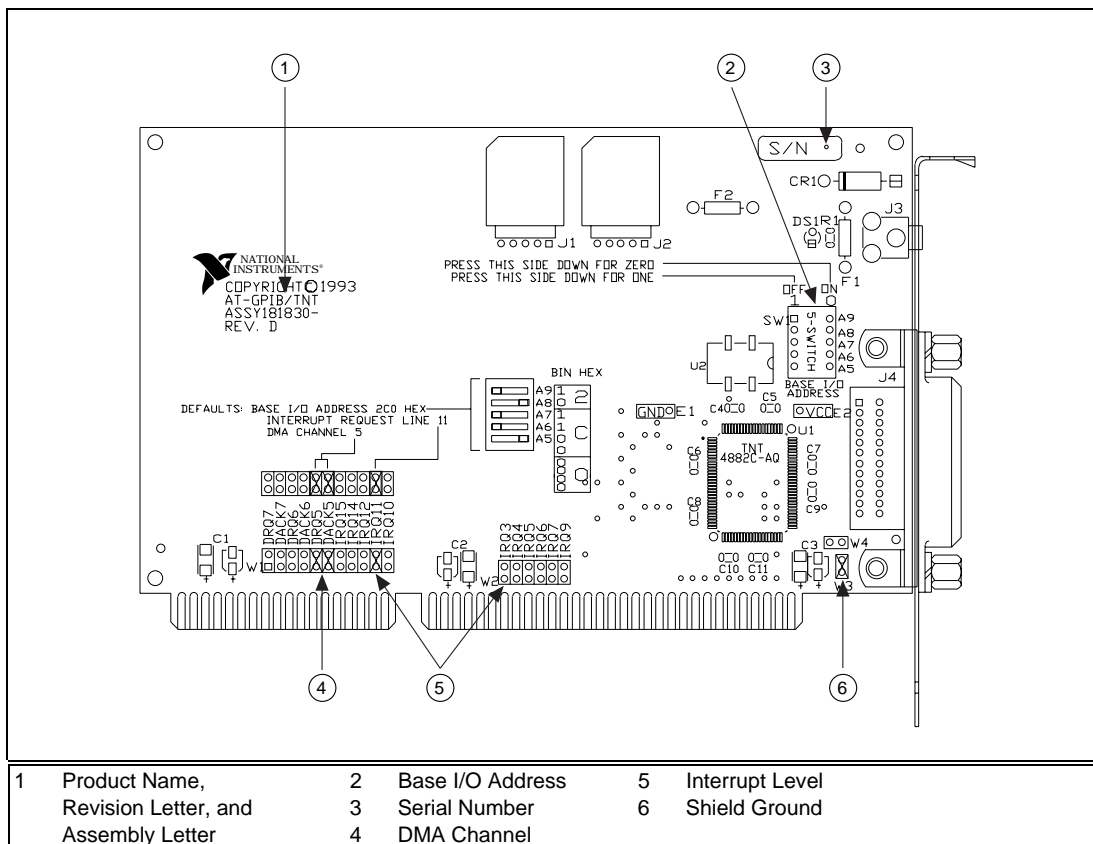


Figure 2-7. AT-GPIB/TNT Parts Locator Diagram

Configure the AT-GPIB/TNT Input/Output Range

An Input/Output Range is a segment of address space reserved for the input and output of a board. The base I/O address of an Input/Output Range is the first position in the Input/Output Range used by the plug-in interface board. By default, the AT-GPIB/TNT is configured to use base I/O address 2C0 hex. With this setting, the board uses an Input/Output Range of 2C0 hex to 2DF hex.

Follow these steps to reconfigure the base I/O address of the AT-GPIB/TNT:

1. Locate the base I/O address switch at SW1 on your AT-GPIB/TNT board. Refer to the parts locator diagram, Figure 2-7.
2. Change the switch settings to configure the GPIB board to match the base I/O address of the Input/Output Range assigned by Windows 95.

Press down on the side marked OFF to select a binary value of 1 for the corresponding address bit. Press down on the ON side of the switch to select a binary value of 0. Refer to Figure 2-8 for an example of the switch settings and corresponding base I/O addresses. Table 2-1 shows the possible switch settings, the corresponding base I/O addresses, and the I/O address space used for each setting. The default settings are in *bold italics*.

Table 2-1. Possible Base I/O Address Switch Settings

Switch Setting					Base I/O Address (hex)	I/O Address Space Used (hex)
A9	A8	A7	A6	A5		
0	1	0	0	0	100	100 to 11F
0	1	0	0	1	120	120 to 13F
0	1	0	1	0	140	140 to 15F
0	1	0	1	1	160	160 to 17F
0	1	1	0	0	180	180 to 19F
0	1	1	0	1	1A0	1A0 to 1BF
0	1	1	1	0	1C0	1C0 to 1DF
0	1	1	1	1	1E0	1E0 to 1FF
1	0	0	0	0	200	200 to 21F
1	0	0	0	1	220	220 to 23F

Table 2-1. Possible Base I/O Address Switch Settings (Continued)

Switch Setting					Base I/O Address (hex)	I/O Address Space Used (hex)
A9	A8	A7	A6	A5		
1	0	0	1	0	240	240 to 25F
1	0	0	1	1	260	260 to 27F
1	0	1	0	0	280	280 to 29F
1	0	1	0	1	2A0	2A0 to 2BF
1	0	1	1	0	2C0	2C0 to 2DF
1	0	1	1	1	2E0	2E0 to 2FF
1	1	0	0	0	300	300 to 31F
1	1	0	0	1	320	320 to 33F
1	1	0	1	0	340	340 to 35F
1	1	0	1	1	360	360 to 37F
1	1	1	0	0	380	380 to 39F
1	1	1	0	1	3A0	3A0 to 3BF
1	1	1	1	0	3C0	3C0 to 3DF
1	1	1	1	1	3E0	3E0 to 3FF

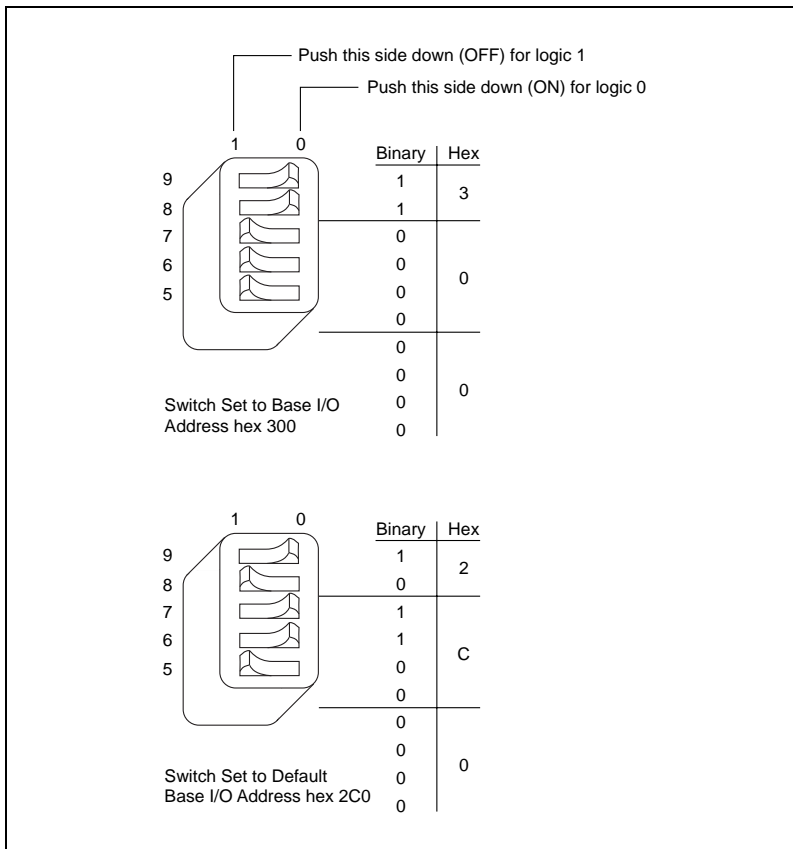


Figure 2-8. AT-GPIB/TNT Base I/O Address Switch Settings

Configure the AT-GPIB/TNT Interrupt Request

PC AT compatible computers have a series of interrupt lines available to devices. Devices use interrupts to get immediate service from the CPU for asynchronous events. Your GPIB hardware and software use interrupts to get service from the CPU when necessary. By default, the AT-GPIB/TNT is configured to use interrupt request line 11.



Note:

If there are no interrupt lines available for your GPIB hardware, the jumpers that set the interrupt request line have no effect. You can leave them at the default setting.

Follow these steps to reconfigure the interrupt request line:

1. Find the jumpers that set the interrupt request line. The jumpers are located on the lower edge of your AT-GPIB/TNT. Refer to the parts locator diagram, Figure 2-7.
2. Change the jumper settings to configure the AT-GPIB/TNT to the new interrupt request line.

To use lines 10, 11, 12, or 15, use the jumper block shown in Figure 2-9. To use interrupt lines 3, 4, 5, 7, or 9, use the jumper block shown in Figure 2-10.

Figure 2-9 shows the setting for IRQ11.

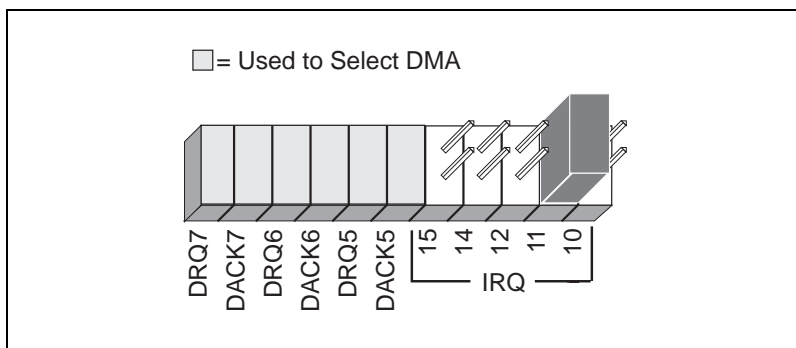


Figure 2-9. AT-GPIB/TNT Interrupt Jumper Setting for IRQ11 (Default Setting)

Figure 2-10 shows the setting for IRQ5.

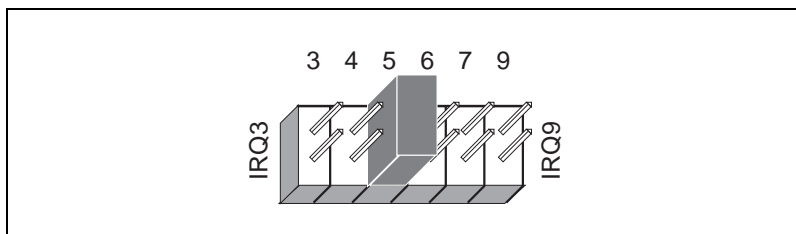


Figure 2-10. AT-GPIB/TNT Interrupt Jumper Setting for IRQ5

Configure the AT-GPIB/TNT Direct Memory Access

Direct memory access (DMA) refers to data transfers directly to or directly from devices such as the AT-GPIB/TNT and computer memory. Your GPIB hardware and software are designed to perform DMA. In most cases, data transfers using DMA are significantly faster than programmed I/O transfers, which use more CPU time. However, if Windows 95 is unable to assign a DMA resource to the AT-GPIB/TNT, you can configure DMA to none and still use the GPIB software for Windows 95. By default, the AT-GPIB/TNT is configured to use DMA channel 5.

Follow these steps to reconfigure the DMA channel:

1. Locate the jumpers that select the DMA channel. Refer to the parts locator diagram, Figure 2-7.
2. Change the jumper settings to configure the GPIB board to the new DMA channel. To select a new DMA channel, you must set both the DMA Acknowledge and DMA Request lines, as shown in Table 2-2.

Table 2-2. AT-GPIB/TNT DMA Channel Settings

DMA Channel	Signal Lines	
	DMA Acknowledge	DMA Request
5	DACK5	DRQ5
6	DACK6	DRQ6
7	DACK7	DRQ7
none	—	—

Figure 2-11 shows the jumper position for selecting DMA channel 7.

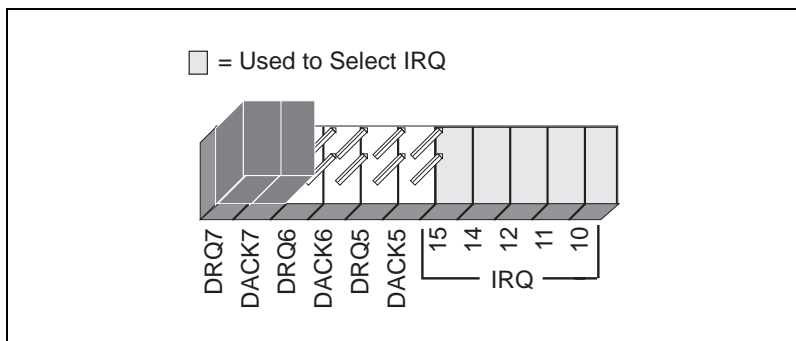


Figure 2-11. AT-GPIB/TNT DMA Jumper Setting for DMA Channel 7

Figure 2-12 shows the jumper position for selecting no DMA channel.

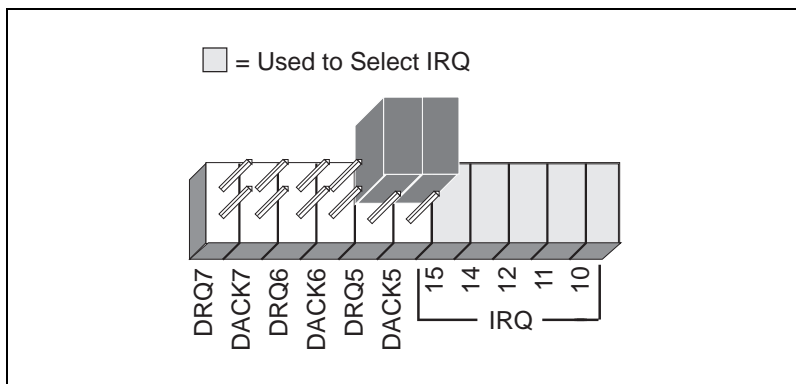


Figure 2-12. AT-GPIB/TNT DMA Jumper Setting for No DMA Channel

Setting the AT-GPIB/TNT Shield Ground Configuration

The AT-GPIB/TNT is set at the factory with the jumper in place to connect the logic ground of the AT-GPIB/TNT to its shield ground. This configuration minimizes EMI emissions.



Caution:

The AT-GPIB/TNT was tested for compliance with FCC standards with the shield ground connected to logic ground. Removing the jumper might cause EMI emissions to exceed any or all of the applicable standards.

If your application requires that logic ground be disconnected from shield ground, follow these steps:

1. Refer to Figure 2-7 to locate the shield ground jumper W3 on the AT-GPIB/TNT.
2. Remove the jumper and place it across only one of the jumper pins, as shown in Figure 2-13.

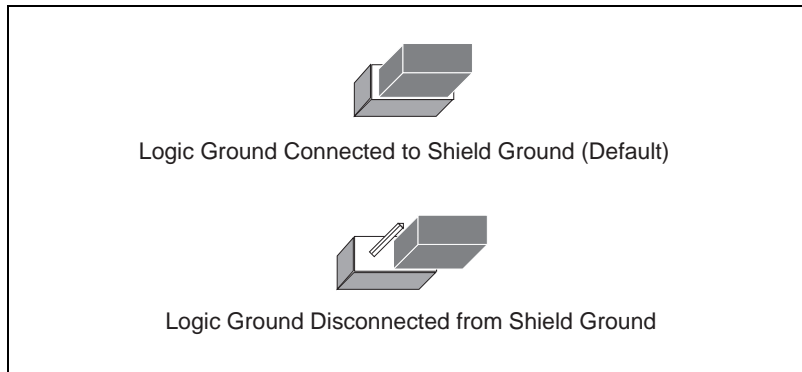


Figure 2-13. AT-GPIB/TNT Ground Configuration Jumper Settings

3. Record the jumper setting on the *Hardware and Software Configuration Form* in Appendix E, *Customer Communication*.

Now that you have properly configured the hardware, continue to the *Install the AT-GPIB/TNT* section for installation instructions.

Install the AT-GPIB/TNT

Complete the following steps to install the AT-GPIB/TNT:

1. Power off your computer. Keep the computer plugged in so that it remains grounded while you install the GPIB hardware.
2. Remove the top cover (or other access panels) to give yourself access to the computer expansion slots.
3. Find an unused expansion slot in your computer. The AT-GPIB/TNT requires a 16-bit ISA expansion slot.
4. Remove the corresponding slot cover on the back panel of the computer.
5. Insert the AT-GPIB/TNT into the slot with the GPIB connector sticking out of the opening on the back panel, as shown in Figure 2-14. It might be a tight fit, but do not force the board into place.

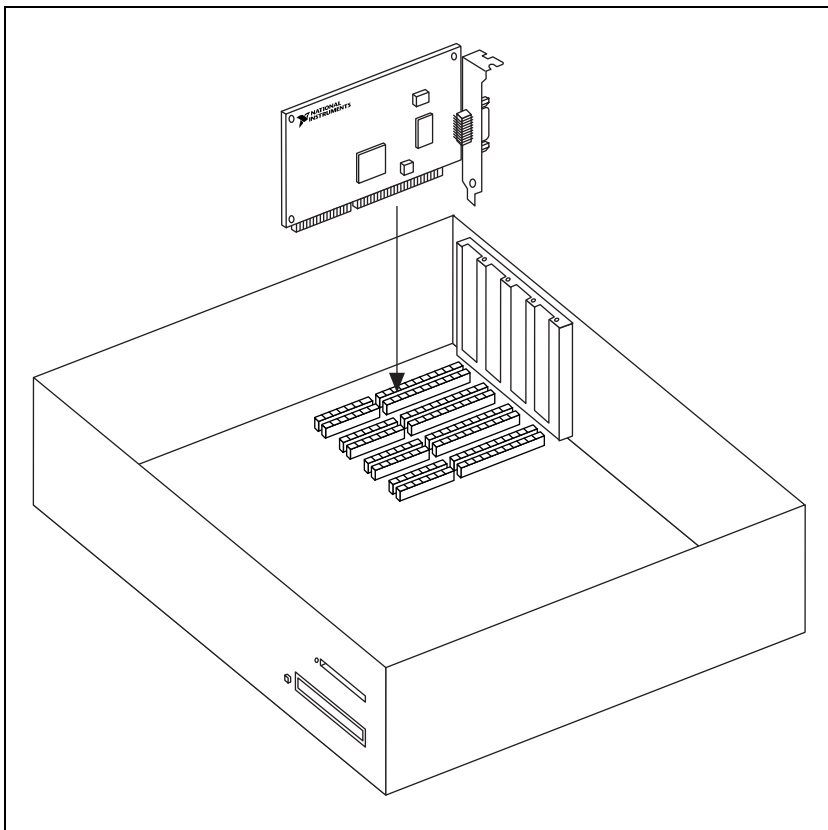


Figure 2-14. Installing the AT-GPIB/TNT

6. Screw the mounting bracket of the AT-GPIB/TNT to the back panel rail of the computer.
7. Replace the top cover (or the access port to the expansion slot).
8. Power on your computer and start Windows 95.

The AT-GPIB/TNT hardware installation is now complete. Proceed to the *Configure the NI-488.2M Software* section later in this chapter.

EISA-GPIB Hardware Installation

Identify Resources for the EISA-GPIB

Before installing the EISA-GPIB, you should determine what direct memory access (DMA) channel and interrupt request level (IRQ) resources are available for use by the board. To see which resources are in use by other devices, complete the following steps:

1. Select **Start»Settings»Control Panel**.
2. Run the System Properties applet by double-clicking on the **System** icon.
3. Select the **Device Manager** tab.
4. Click on the **Computer** icon at the top of the Device Manager list of devices.
5. Click on the **Properties** button.
6. Click on a resource type at the top of the dialog box to see which resource settings are in use. If all resources of a particular type are in use, you need to disable one or more other hardware devices to make the required resources available for the EISA-GPIB.

When you have determined which DMA and IRQ resources are available for use by the EISA-GPIB, you may want to write them down before proceeding to the next section, *Install the EISA-GPIB*.

Install the EISA-GPIB



Warning:

Electrostatic discharge can damage several components on the EISA-GPIB. To avoid such damage in handling the board, touch the antistatic plastic package to a metal part of your computer chassis before removing the board from the package.

Before you install the EISA-GPIB, make sure you have a backup copy of the EISA configuration disk. If you do not have one, you can make one by following the instructions in the documentation that came with your computer.

Perform the following steps to install the EISA-GPIB:

1. Copy the `.cfg` file from the *GPIB Software for Windows 95 (Setup Disk)* to your backup copy of the EISA configuration disk.

2. Power off your computer. Keep the computer plugged in so that it remains grounded while you install the GPIB hardware.
3. Remove the top cover (or other access panels) to give yourself access to the computer expansion slots.
4. Find an unused EISA expansion slot in your computer.
5. Remove the corresponding slot cover on the back panel of the computer.
6. Insert the EISA-GPIB into the slot with the GPIB connector sticking out of the opening on the back panel. It might be a tight fit, but do not force the board into place. Figure 2-14, earlier in this chapter, shows a similar installation for the AT-GPIB/TNT.
7. Screw the mounting bracket of the EISA-GPIB to the back panel rail of the computer.
8. Replace the top cover (or the access port to the expansion slot).
9. Restart your computer with the backup copy of the EISA configuration disk inserted into the disk drive. Follow the instructions that came with your computer to configure the computer automatically.

The EISA configuration utility on the disk automatically configures the EISA-GPIB hardware by assigning values for the IRQ level and DMA channel of the board. However, you must modify these values to match the IRQ and DMA resources that you have previously determined are available for use under Windows 95. Refer to the *Identify Resources for the EISA-GPIB* section, earlier in this chapter, for details on how to determine available resources. To modify the EISA configuration, follow the instructions that came with your computer.

10. Remove the EISA configuration disk.
11. Restart your computer and start Windows 95. Windows 95 should automatically detect the GPIB hardware, and should display a **New Hardware Found** dialog box for a short time.

If the **New Hardware Found** dialog box does not appear when you restart Windows 95, refer to Appendix B, *Forcing Windows 95 to Detect the EISA-GPIB*.

The EISA-GPIB hardware installation is now complete. Proceed to the next section, *Configure the NI-488.2M Software*.

Configure the NI-488.2M Software

The GPIB configuration utility is fully integrated with the Windows 95 Device Manager. You can use it to examine or modify the configuration of the NI-488.2M software. The context-sensitive online help, available by right-clicking on any of the controls on the configuration utility tabs, includes all of the information that you need to configure the NI-488.2M software properly.

To configure the NI-488.2M software, double-click on the **System** icon under **Start»Settings»Control Panel**. In the **System Properties** dialog box that appears, select the **Device Manager** tab, click on the **View devices by type** button at the top of the tab, and double-click on the **National Instruments GPIB Interfaces** icon.

If there is no **National Instruments GPIB Interfaces** item or if a circled X or exclamation point (!) appears through the eagle icon, the GPIB interface is not working properly. Figure 2-15 shows an example of an AT-GPIB/TNT that is working properly, and Figure 2-16 shows an example of an AT-GPIB/TNT that is not working properly. Refer to the *Troubleshooting Device Manager Problems* section of Appendix C, *Troubleshooting and Common Questions*, to resolve the problem.



Figure 2-15. GPIB Interface That Is Working Properly



Figure 2-16. GPIB Interface That Is Not Working Properly

To configure a particular interface, double-click on that interface type in the list of installed interfaces immediately below **National Instruments GPIB Interfaces**. If you are using more than one interface, you must configure the NI-488.2M software to associate a logical name (GPIB0, GPIB1, and so on) with each physical GPIB interface.

The **Resources** tab provides information about the hardware resources assigned to the GPIB interface. Select the **Resources** tab to examine the assigned resources to verify that there are no conflicts. The **Conflicting Device List** lists any conflicts. If conflicts exist, use the **Setting based on:** drop-down list and the **Change Setting...** button to select conflict-free resources for the Non Plug and Play GPIB hardware.

The **NI-488.2M Settings** tab provides information about the software configuration for the GPIB interface. Use the **Interface Name** drop-down box to select a logical name (GPIB0, GPIB1, and so on) for the GPIB interface. Repeat this process for each interface you need to configure. Figure 2-17 shows the **NI-488.2M Settings** page for an AT-GPIB/TNT.

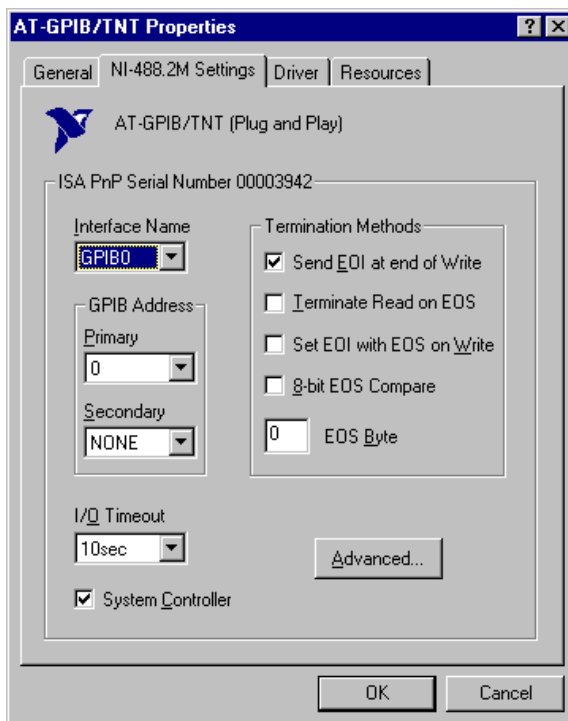


Figure 2-17 NI-488.2M Settings Page for the AT-GPIB/TNT

If you want to examine or modify the logical device templates for the GPIB software, select the **National Instruments GPIB Interfaces** icon from the **Device Manager** page, and click on the **Properties** button. Select the **Device Templates** tab to view the logical device templates, as shown in Figure 2-18.

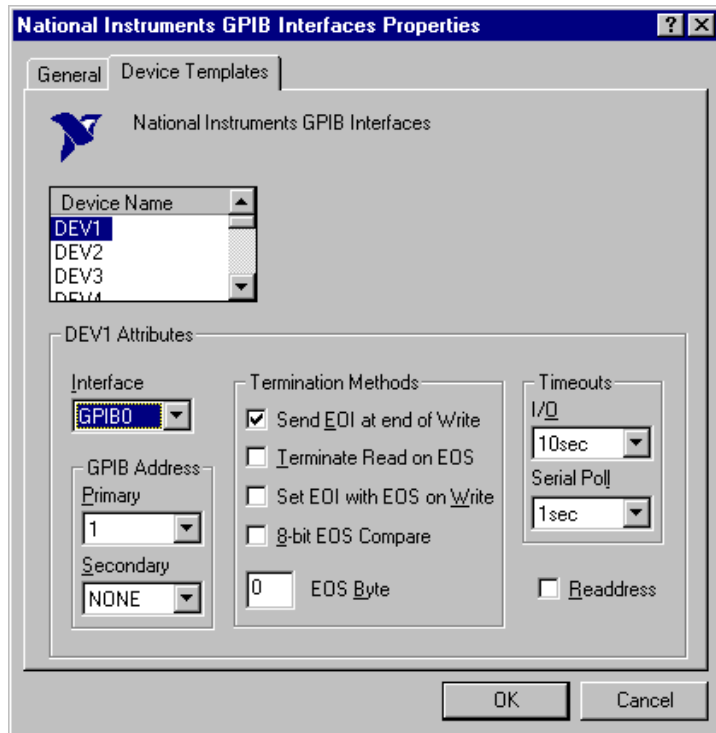


Figure 2-18. Device Templates Page for the Logical Device Templates

When you have finished configuring the NI-488.2M software, proceed to Chapter 3, *Verify the Installation*.

Verify the Installation

This chapter describes how to verify the hardware and software installation.

You can use the Diagnostic utility, installed with your GPIB software, to test the hardware and software installation. The utility verifies that your hardware and software are functioning properly and that the configuration of your GPIB interfaces does not conflict with anything else in your system.

To run the utility, select the **Diagnostic** item under **Start»Programs»NI-488.2M Software for Windows 95**.

When you have started the Diagnostic utility, test your GPIB interfaces by clicking on the **Test All** button. If the Diagnostic is successful, it puts a checkmark next to the interface and changes its status from **untested** to **passed**. If the Diagnostic fails, it puts an X next to the interface, and changes its status from **untested** to **failed**. Figure 3-1 shows the Diagnostic utility after it has tested some GPIB interfaces.

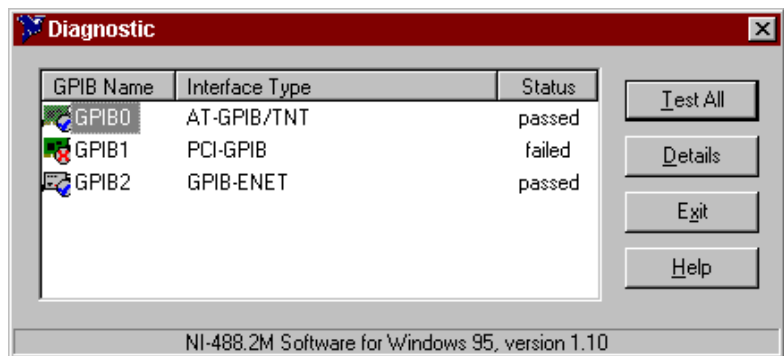
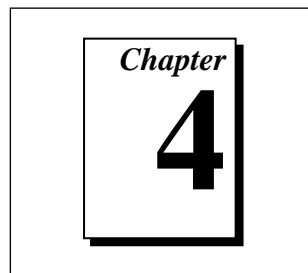


Figure 3-1. Diagnostic Utility after Testing

You can get details on any tested GPIB interface by selecting the interface and clicking on the **Details** button. For each failed GPIB interface, select it and click on the **Details** button to get a description of the failure. Use that information and the information in Appendix C, *Troubleshooting and Common Questions*, to troubleshoot the problem. Troubleshooting information is also available in the online help for the Diagnostic utility, which you can access by clicking on the **Help** button.

Begin to Use the GPIB Software



This chapter helps you get started with the NI-488.2M software for Windows 95.

Introduction to the Win32 Interactive Control Utility

You can use the interactive control utility to enter NI-488 functions and NI-488.2 routines interactively and see the values returned by the function calls. You can use the utility to do the following:

- Verify GPIB communication with your device quickly and easily.
- Learn the NI-488 functions and NI-488.2 routines before you write your application.
- Become familiar with the commands of your device.
- Receive data from your GPIB device.
- Troubleshoot problems with your application.

To run this utility, select the **Win32 Interactive Control** item under **Start>Programs>NI-488.2M Software for Windows 95**. This utility includes extensive online help, available only by entering `help` at the `:` prompt.

For more information about the Win32 Interactive Control utility, refer to the *NI-488.2M User Manual for Windows 95 and Windows NT*.

Introduction to the GPIB Spy Utility

Included with the NI-488.2M software is GPIB Spy, a Win32 utility that can be used to monitor NI-488.2M calls made by Win32, Win16, and DOS GPIB applications. You can use GPIB Spy to do the following:

- Capture information about NI-488 functions and NI-488.2M routines as they are invoked by your GPIB applications.
- Display captured information, including, but not limited to, input and output parameter values, I/O buffer contents, and return values.
- Save, restore, and print captured information.

To run GPIB Spy, select the **GPIB Spy** item under **Start»Programs»NI-488.2M Software for Windows 95**. For more information about the GPIB Spy utility, refer to Chapter 5, *GPIB Spy Utility*, in the *NI-488.2M User Manual for Windows 95 and Windows NT*, or use its built-in, context-sensitive online help.

Running Existing DOS GPIB Applications

With the NI-488.2M software properly configured, you can run your existing DOS GPIB applications along with your Win16 and Win32 applications. No DOS device driver is required. In fact, make sure that no older version of the GPIB DOS device driver is being loaded from your `config.sys` file, a file located on the boot drive of your computer.



Note:

To determine if `config.sys` is loading an older GPIB DOS driver, look for the line `device=path\gpib.com` in your `config.sys` file, where `path` refers to the drive and directory where `gpib.com` is located. If that line appears, either delete it or comment it out, and restart your computer.

To configure the NI-488.2M software to run existing DOS GPIB applications, first make sure that you have installed the NI-488.2M software and your GPIB hardware. Then complete the following steps:

1. Double-click on the **System** icon under **Start»Settings»Control Panel**.
2. In the **System Properties** dialog box that appears, select the **Device Manager** tab.
3. Click on the **View devices by type** button at the top of the page.

4. Click on the **National Instruments GPIB Interfaces** icon.
5. Click on the **Properties** button to display the **General** property page for the NI-488.2M software.
6. Click on the check box labeled **Enable Support for DOS GPIB Applications**, and click on the **OK** button.
7. Restart your computer.

After you restart your computer, you can begin to run your existing DOS GPIB applications.

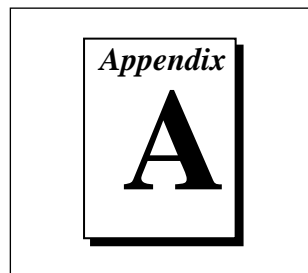
General Programming Considerations

As you begin developing your Win32 NI-488.2M application, remember the following points:

- For your C/C++ application, you must include the NI-488.2M header file in your source code.
- The NI-488.2M software is accessed through the 32-bit DLL, `gpib-32.dll`, either by linking with one of the language interfaces provided with the NI-488.2M software, or by using direct DLL entry from other programming environments.
- Several sample GPIB applications are included with the NI-488.2M software. Use these as a guide for your own application development.

For information about choosing a programming method, developing your application, or compiling and linking, refer to the *NI-488.2M User Manual for Windows 95 and Windows NT*. For detailed information about each NI-488 function and NI-488.2 routine, refer to the *NI-488.2M Function Reference Manual for Win32* or the online help file, `gpib32.hlp`.

Uninstalling the Hardware and Software



This appendix describes how to uninstall the Non Plug and Play GPIB hardware and software from Windows 95.

Uninstalling the Hardware

Before physically removing the Non Plug and Play GPIB hardware from the computer, you must remove the hardware information from the Windows 95 Device Manager.

To remove the hardware information from Windows 95, double-click on the **System** icon under **Start»Settings»Control Panel**. In the **System Properties** dialog box that appears, select the **Device Manager** tab, click on the **View devices by type** button, and double-click on the **National Instruments GPIB Interfaces** icon.

To remove an interface, select it from the list of interfaces under **National Instruments GPIB Interfaces** as shown in Figure A-1, and click on the **Remove** button.

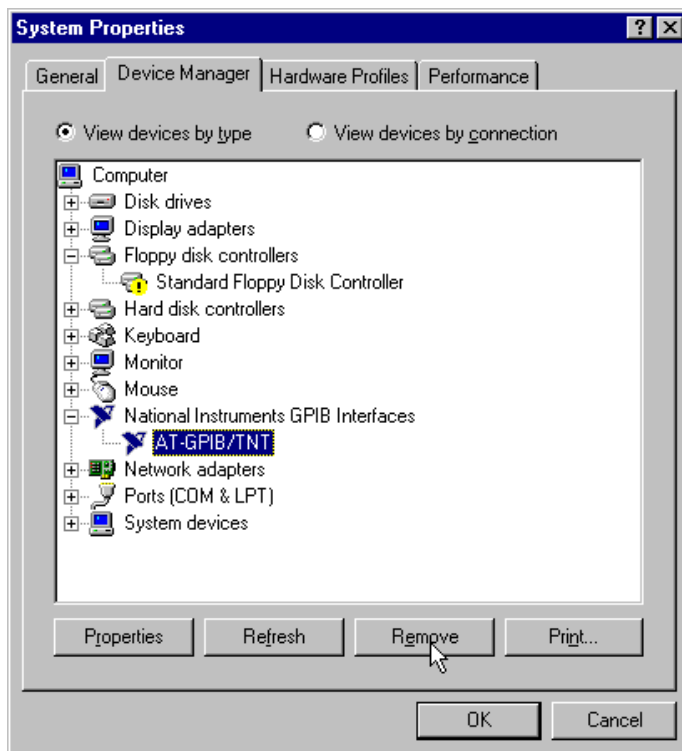


Figure A-1. Selecting an Interface to Remove

After you remove the appropriate interface information from the Device Manager, shut down Windows 95, power off the computer, and physically remove the interface from your computer.

If you are removing an EISA-GPIB, you must run your EISA configuration utility before restarting Windows 95. Follow the instructions in the documentation that came with your computer.

Uninstalling the Software

Before uninstalling the software, you should remove all GPIB interface information from the Windows 95 Device Manager, as described in the previous section. You do not need to shut down Windows 95 before uninstalling the software.

Complete the following steps to remove the GPIB software:

1. Select **Start»Settings»Control Panel**.
2. Double-click on the **Add/Remove Programs** icon in the Control Panel to launch the Add/Remove Programs applet. The dialog box shown in Figure A-2 appears. This dialog box lists the software available for removal.



Figure A-2. Add/Remove Programs Properties Dialog Box

3. Select the GPIB software you want to remove, and click on the **Add/Remove...** button. An uninstall program runs and removes all folders, programs, VxDs, DLLs, and registry entries associated with the GPIB software. Figure A-3 shows the results of a successful uninstallation.

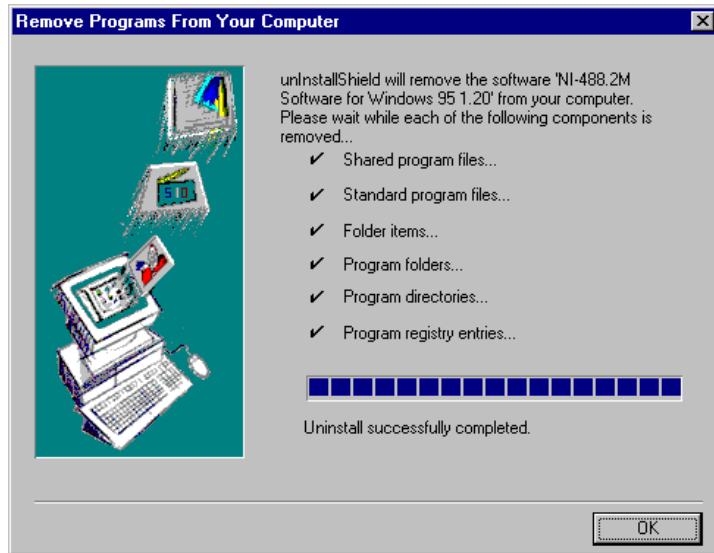
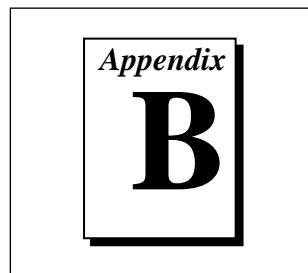


Figure A-3. Uninstallation Results

If you have not physically removed your hardware, shut down Windows 95, power off your computer, and remove the GPIB hardware.

If you want to reinstall the hardware and software, refer to Chapter 2, *Installation and Configuration*.

Forcing Windows 95 to Detect the EISA-GPIB

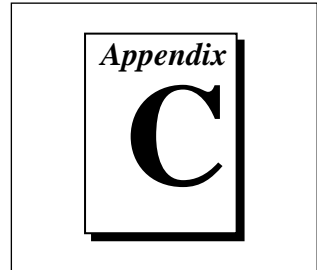


This appendix contains instructions to help you install your EISA-GPIB if Windows 95 has not detected it properly.

If Windows 95 does not detect your EISA-GPIB interface properly, it may not display the **New Hardware Found** dialog boxes when expected, or the driver may return an EDVR error when you try to access the EISA-GPIB. This problem occurs if Windows 95 has already configured the EISA-GPIB as an **Other Device**. To fix the problem, complete the following steps:

1. Select **Start»Settings»Control Panel**.
2. Double-click on the **System** icon to display the **System Properties** dialog box for the computer.
3. Click on the **Device Manager** tab at the top of the **System Properties** page to bring up the **Device Manager** property page. Make sure the **View devices by type** button at the top of the **Device Manager** page is selected.
4. Click on the + sign next to **Other Devices** to display a list of all the hardware devices that Windows 95 has detected and configured as **Other Devices**.
5. For each National Instruments GPIB interface listed, select the interface by clicking on it, and then click on the **Remove** button to remove the interface from the list of **Other Devices**.
6. After you have removed all of the National Instruments GPIB interfaces from the list of **Other Devices**, click on the **Refresh** button to force Windows 95 to detect each National Instruments GPIB interface and to display a **New Hardware Found** dialog box for each one.
7. Proceed with the hardware installation, as described in Chapter 2, *Installation and Configuration*.

Troubleshooting and Common Questions



This appendix describes how to troubleshoot problems and answers some common questions.

Troubleshooting EDVR Error Conditions

In some cases, calls to NI-488 functions or NI-488.2 routines may return with the ERR bit set in `ibsta` and the value EDVR in `iberr`. The value stored in `ibcntl` is useful in troubleshooting the error condition.

EDVR Error Condition with `ibcntl` Set to 0xE028002C (-534249428)

If a call is made with a board number that is within the range of allowed board numbers (typically 0 to 3), but which has not been assigned to a GPIB interface, an EDVR error condition occurs with `ibcntl` set to 0xE028002C. You can assign a board number to a GPIB interface by configuring the NI-488.2M software and selecting an interface name. Refer to the *Configure the NI-488.2M Software* section of Chapter 2, *Installation and Configuration*, for information about how to configure the NI-488.2M software.

EDVR Error Condition with `ibcntl` Set to 0xE0140025 (-535560155)

If a call is made with a board number that is not within the range of allowed board numbers (typically 0 to 3), an EDVR error condition occurs with `ibcntl` set to 0xE0140025.

EDVR Error Condition with `ibcntl` Set to 0xE0140035 (-535560139)

If a call is made with a device name that is not listed in the logical device templates that are part of the GPIB configuration utility, an EDVR error condition occurs with `ibcntl` set to 0xE0140035.

EDVR Error Condition with `ibcntl` Set to `0xE0320029` (-533594071) or `0xE1050029` (-519765975)

If a call is made with a board number that is assigned to a GPIB interface that is unusable because of a resource conflict, an EDVR error condition occurs with `ibcntl` set to `0xE0320029` or `0xE1050029`. This error indicates that the GPIB interface is not working properly. Refer to the *GPIB Interface Not Working Properly* section later in this appendix.

EDVR Error Condition with `ibcntl` set to `0xE0140004` (-535560188)

This error may occur if the EISA-GPIB interface has not been correctly installed and detected by Windows 95. Refer to Chapter 2, *Installation and Configuration*, for details on how to install the GPIB hardware. If you have already followed those instructions and still receive this error, Windows 95 might have configured the EISA-GPIB as an **Other Device**. Refer to Appendix B, *Forcing Windows 95 to Detect the EISA-GPIB*, for information about how to solve this problem.

EDVR Error Condition with `ibcntl` set to `0xE1030043` (-519897021)

This error occurs if you have enabled DOS GPIB support and attempted to run an existing GPIB DOS application that was compiled with an older, unsupported DOS language interface.

Troubleshooting Device Manager Problems

The Windows 95 Device Manager contains configuration information for all of the GPIB hardware it is aware of that is installed in your system. To start the Windows 95 Device Manager, double-click on the **System** icon under **Start»Settings»Control Panel**. In the **System Properties** box that appears, select the **Device Manager** tab and click on the **View devices by type** button at the top of the tab.

If there is no **National Instruments GPIB Interfaces** item and you are certain you have a GPIB interface installed, refer to the *No National Instruments GPIB Interfaces Item* section of this appendix.

If the **National Instruments GPIB Interfaces** item exists, but the GPIB interface you are looking for is not listed there, refer to the *Missing GPIB Interface* section of this appendix.

If the GPIB interface you are looking for is listed, but has a circled X or exclamation mark (!) over its icon, refer to the *GPIB Interface Not Working Properly* section of this appendix.

No National Instruments GPIB Interfaces Item

The **National Instruments GPIB Interfaces** item might be missing from the Device Manager because you have not yet used the **Add New Hardware Wizard** in the **Control Panel** to add the new Non Plug and Play GPIB hardware to the system. To start the **Add New Hardware Wizard**, double-click on the **Add New Hardware** icon under **Start»Settings»Control Panel**. For details on how to use the **Add New Hardware Wizard** to add information about Non Plug and Play GPIB hardware, refer to the appropriate hardware installation section in Chapter 2, *Installation and Configuration*.

Missing GPIB Interface

If the **National Instruments GPIB Interfaces** item exists, but the GPIB interface you are looking for is not listed there, the GPIB interface is not properly installed. For Non Plug and Play GPIB hardware, this means that the **Add New Hardware Wizard** has not been run to add the new hardware to your Windows 95 system. To run the **Add New Hardware Wizard**, double-click on the **Add New Hardware** icon under **Start»Settings»Control Panel**. For details on how to use the **Add New Hardware Wizard** to add information about Non Plug and Play GPIB hardware, refer to the appropriate hardware installation section in Chapter 2, *Installation and Configuration*.

GPIB Interface Not Working Properly

If a GPIB interface is not working properly, its icon has a circled X or exclamation mark (!) overlaid on it, as shown in Figure C-1.



Figure C-1. GPIB Interface That Is Not Working Properly

This problem can occur for several reasons. If you encounter this problem, the Device Manager should list an error code that indicates why the problem occurred. To see the error code for a particular interface, select the name of the interface and click on the **Properties** button to go to the **General** page for that GPIB interface. The **Device Status** section of the **General** page shows the error code. Locate the error code in the following list to find out why your GPIB interface is not working properly.

- Code 8: The GPIB software was incompletely installed. To solve this problem, reinstall the GPIB software for Windows 95.
- Code 22: The GPIB interface is disabled. To enable the GPIB interface, check the appropriate configuration checkbox in the **Device Usage** section of the **General** page.
- Code 24: The GPIB interface is not installed, or it is not configured to match the resources assigned to it. Either install the GPIB interface, or verify that the resources assigned to it on the **Resources** page match its settings.
- Code 27: Windows 95 was unable to assign the GPIB interface any resources. To solve this problem, free up system resources by disabling other unnecessary hardware so that enough resources are available for the GPIB interface.

Removing System-Reserved Resources

If you have previously installed the Compatibility Release for Windows 95, you should remove any system-reserved resources for your AT-GPIB/TNT. System-reserved resources are only acquired manually. If you did not use the Device Manager to acquire system-reserved resources, you do not need to use the Device Manager to remove such resources.

To remove any resources that you reserved for your AT-GPIB/TNT, complete the following steps:

1. Select **Start»Settings»Control Panel**.
2. Run the System Properties applet by double-clicking on the **System** icon.
3. In the **System Properties** dialog box that appears, select the **Device Manager** tab.

4. Click on the **View devices by type** button at the top of the **Device Manager** page.
5. Double-click on the **Computer** icon.
6. In the **Computer Properties** dialog box that appears, click on the **Reserve Resources** tab.
7. Remove the **Interrupt request (IRQ)**, **Input/output (I/O)**, and **Direct memory access (DMA)** resources that you reserved for the AT-GPIB/TNT.
8. Click on the **OK** button to exit the **Computer Properties** dialog box.
9. Click on the **OK** button again to exit the **Device Manager** dialog box.

Troubleshooting Diagnostic Utility Failures

The following sections explain common error messages generated by the Diagnostic utility.

Missing Software Components

This error occurs if the software components that are necessary for the GPIB software for Windows 95 to function correctly are not present in the system. If you encounter this problem, reinstall the GPIB software for Windows 95 and run the Diagnostic utility again.

No Properly Configured GPIB Interfaces Found

This error occurs if no GPIB interfaces are physically present in the system, if the Device Manager detected problems with the GPIB interfaces, or if you have not assigned logical board names to your GPIB interfaces using the Device Manager. If you encounter this problem, use the Device Manager to examine the installed GPIB interfaces, resolve any problems reported by the Device Manager, and ensure that logical board names are assigned to each interface. Then, run the Diagnostic utility again.

To access this information in the Device Manager, complete the following steps:

1. Double-click on the **System** icon under **Start»Settings»Control Panel**.

2. In the **System Properties** dialog box that appears, select the **Device Manager** tab.
3. Click on the **View devices by type** button at the top of the **Device Manager** page.
4. Double-click on the **National Instruments GPIB Interfaces** icon. If there is no **National Instruments GPIB Interfaces** icon, either no GPIB interfaces are installed in your system or the GPIB software for Windows 95 is installed incorrectly. If you see a **National Instruments GPIB Interfaces** icon, and a GPIB interface listed under it has a circled X or ! over its icon, refer to the *Troubleshooting Device Manager Problems* section earlier in this appendix.
5. After you have opened the **National Instruments GPIB Interfaces** icon, double-click on the GPIB interface name and select the **NI-488.2M Settings** tab to examine the logical board name associated with that interface. If it is set to **None**, change it to the appropriate name, such as **GPIB0**.

GPIB Cables Need To Be Disconnected

This error occurs if you have any GPIB cables connected to the GPIB interface. Disconnect all GPIB cables and run the Diagnostic utility again.

Address Resource Conflict

This error occurs if the address resources assigned to a GPIB interface conflict with the address resources being used by other devices in the system. Resource conflicts typically occur when your system contains legacy boards that use resources that have not been reserved properly with the Device Manager. If a resource conflict exists, write down the resource that caused the conflict and refer to the *Microsoft Windows 95 Online Help* for instructions on how to use the Device Manager to reserve I/O resources for legacy boards. After the conflict has been resolved, run the Diagnostic utility again.

Interrupt Resource Conflict

This error occurs if the interrupt resources assigned to a GPIB interface conflict with the interrupt resources being used by other devices in the system. Resource conflicts typically occur when your system contains legacy boards that use resources that have not been reserved properly

with the Device Manager. If a resource conflict exists, write down the resource that caused the conflict and refer to the *Microsoft Windows 95 Online Help* for instructions on how to use the Device Manager to reserve IRQ resources for legacy boards. After the conflict has been resolved, run the Diagnostic utility again.

DMA Resource Conflict

This error occurs if the DMA resources assigned to a GPIB interface conflict with the DMA resources being used by other devices in the system. Resource conflicts typically occur when your system contains legacy boards that use resources that have not been reserved properly with the Device Manager. If a resource conflict exists, write down the resource that caused the conflict and refer to the *Microsoft Windows 95 Online Help* for instructions on how to use the Device Manager to reserve DMA resources for legacy boards. After the conflict has been resolved, run the Diagnostic utility again.

Single-Cycle DMA Required

This error occurs if the Diagnostic utility detects that it is unable to perform demand-mode DMA for the GPIB interface and that the GPIB software has not been configured to use single-cycle DMA. GPIB interfaces that use the system DMA controller (such as the AT-GPIB/TNT) normally use demand-mode DMA. If you get this error, you should use the Device Manager to configure the GPIB software to use single-cycle DMA for all DMA transfers, and then run the Diagnostic utility again.

To configure the GPIB software to use single-cycle DMA for a particular GPIB interface, complete the following steps:

1. Double-click on the **System** icon under **Start»Settings»Control Panel**.
2. In the **System Properties** dialog box that appears, select the **Device Manager** tab.
3. Click on the **View devices by type** button at the top of the **Device Manager** page.
4. Double-click on the **National Instruments GPIB Interfaces** icon.
5. Double-click on the GPIB interface to be configured.
6. Select the **NI-488.2M Settings** tab.

7. Click on the **Advanced...** button and make sure that the **Demand Mode DMA** item is unchecked.

GPIB Software Problem Encountered

This error occurs if the Diagnostic utility detects that it is unable to communicate correctly with the GPIB hardware using the installed GPIB software. If you get this error, shut down your computer, restart it, and run the Diagnostic utility again. If the problem persists, try reinstalling the GPIB software for Windows 95.

Unknown Problem Encountered

This error occurs if an unknown problem is encountered while trying to execute the Diagnostic utility. If you encounter this problem, shut down your computer, restart it, and run the Diagnostic utility again. If the problem persists, try reinstalling the GPIB software for Windows 95.

Common Questions

What do I do if my GPIB hardware is listed in the Windows 95 Device Manager with a circled X or exclamation point (!) overlaid on it?

Refer to the *GPIB Interface Not Working Properly* section of this appendix for specific information about what might cause this problem. If you have already completed the troubleshooting steps, fill out the forms in Appendix E, *Customer Communication*, and contact National Instruments.

How can I determine which type of GPIB hardware I have installed?

Run the GPIB configuration utility. To run the utility, select **Start»Settings»Control Panel»System**. Select the **Device Manager** tab in the **System Properties** dialog box. Click on the **View devices by type** button at the top of the sheet. If any GPIB hardware is correctly installed, a **National Instruments GPIB Interfaces** icon appears in the list of device types. Double-click on this icon to see a list of installed GPIB hardware.

How can I determine which version of the GPIB software I have installed?

Run the Diagnostic utility. To run the utility, select the **Diagnostic** item under **Start»Programs»NI-488.2M Software for Windows 95**. A banner at the bottom of the Diagnostic utility window displays the version of the GPIB software that is installed.

I have a GPIB interface that the GPIB software for Windows 95 does not support. What should I do?

Contact National Instruments to order the Compatibility Release for Windows 95 or to upgrade your hardware.

What do I do if the Diagnostic utility fails with an error?

Refer to the *Troubleshooting Diagnostic Utility Failures* section of this appendix for specific information about what might cause the Diagnostic utility to fail. If you have already completed the troubleshooting steps, fill out the forms in Appendix E, *Customer Communication*, and contact National Instruments.

How many GPIB interfaces can I configure for use with my GPIB software for Windows 95?

The GPIB software for Windows 95 can be configured to communicate with up to 100 GPIB interfaces.

How many devices can I configure for use with my GPIB software for Windows 95?

The GPIB software for Windows 95 provides a total of 1,024 logical devices for applications to use. The default number of devices is 32. The maximum number of physical devices you should connect to a single GPIB interface is 14, or fewer, depending on your system configuration.

Are interrupts and DMA required for the GPIB software for Windows 95?

Neither DMA nor interrupts nor DMA are required.

When should I use the Win32 Interactive Control utility?

You can use the Win32 Interactive Control utility to test and verify instrument communication, troubleshoot problems, and develop your

application program. For more information, refer to Chapter 4, *Begin to Use the GPIB Software*.

How do I use an NI-488.2M language interface?

For information about using NI-488.2M language interfaces, refer to Chapter 3, *Developing Your Application*, in the *NI-488.2M User Manual for Windows 95 and Windows NT*.

How do I modify the hardware resources that Windows 95 assigned to my AT-GPIB/TNT?

To modify the hardware resources assigned to the AT-GPIB/TNT, double-click on the **System** icon under **Start»Settings»Control Panel**. In the **System Properties** dialog box that appears, select the **Device Manager** tab, click on the **View devices by type** button, and double-click on the **National Instruments GPIB Interfaces** icon. Next, double-click on the **AT-GPIB/TNT** item under **National Instruments GPIB Interfaces**, and click on the **Resources** tab. Use the **Settings based on:** list box or the **Change Setting...** button to modify the resources used by your AT-GPIB/TNT. Make sure to update the switches and jumpers on your board to match the new assigned resources.

Why does the uninstall program leave some components installed?

The uninstall program removes only items that the installation program installed. If you add anything to a directory that was created by installation program, the uninstall program does not delete that directory, because the directory is not empty after the uninstallation. You need to remove any remaining components yourself.

What information should I have before I call National Instruments?

When you call National Instruments, you should have all of the information filled out on the *Hardware and Software Configuration Form* in Appendix E, *Customer Communication*.

Specifications

This appendix describes the physical characteristics of the Non Plug and Play GPIB hardware and the transfer rates of the NI-488.2M software, along with the recommended operating conditions.

Hardware Characteristics

Table D-1. AT-GPIB/TNT Hardware Characteristics

Characteristic	Specification
Dimensions	10.67 by 16.51 cm (4.2 by 6.5 in.)
Power Requirement (from PC AT I/O Channel)	+5 VDC 50 mA Typical 120 mA Maximum
I/O Connector	IEEE 488 Standard 24-Pin
Operating Environment Component Temperature Relative Humidity	0° to 55° C 10% to 90%, Noncondensing
Storage Environment Temperature Relative Humidity	-20° to 70° C 5% to 90%, Noncondensing
EMI	FCC Class B Certified

Table D-2. EISA-GPIB Hardware Characteristics

Characteristic	Specification
Dimensions	11.4 by 16.5 cm (4.5 by 6.5 in.)
Power Requirement	+5 VDC 300 mA
I/O Connector	IEEE 488 Standard 24-Pin
Operating Environment Component Temperature Relative Humidity	0° to 40° C 5% to 90%, Noncondensing
Storage Environment Temperature Relative Humidity	-20° to 70° C 5% to 90%, Noncondensing
EMI	FCC Class B Certified

Software Transfer Rates

Table D-3. NI-488.2M Software Transfer Rates for the AT-GPIB/TNT

Transfer Method	Maximum GPIB Transfer Rate
3-Wire (IEEE 488) In ISA Computer In EISA Computer	1.5 Mbytes/s* 1.5 Mbytes/s*
High Speed (HS488) In ISA Computer In EISA Computer	1.8 Mbytes/s* 2.8 Mbytes/s*
* Actual speed may vary considerably from speed shown because of system and instrumentation capabilities.	

Table D-4. NI-488.2M Software Transfer Rates for the EISA-GPIB

Transfer Method	Maximum GPIB Transfer Rate
3-Wire (IEEE 488)	1.1 Mbytes/s*
High Speed (HS488)	5.3 Mbytes/s*
* Actual speed may vary considerably from speed shown because of system and instrumentation capabilities.	

Customer Communication

For your convenience, this appendix contains forms to help you gather the information necessary to help us solve technical problems you might have as well as a form you can use to comment on the product documentation. Filling out a copy of the *Technical Support Form* before contacting National Instruments helps us help you better and faster.

National Instruments provides comprehensive technical assistance around the world. In the U.S. and Canada, applications engineers are available Monday through Friday from 8:00 a.m. to 6:00 p.m. (central time). In other countries, contact the nearest branch office. You may fax questions to us at any time.

Electronic Services



Bulletin Board Support

National Instruments has BBS and FTP sites dedicated for 24-hour support with a collection of files and documents to answer most common customer questions. From these sites, you can also download the latest instrument drivers, updates, and example programs. For recorded instructions on how to use the bulletin board and FTP services and for BBS automated information, call (512) 795-6990. You can access these services at:

United States: (512) 794-5422

Up to 14,400 baud, 8 data bits, 1 stop bit, no parity

United Kingdom: 01635 551422

Up to 9,600 baud, 8 data bits, 1 stop bit, no parity

France: 01 48 65 15 59

Up to 9,600 baud, 8 data bits, 1 stop bit, no parity



FTP Support

To access our FTP site, log on to our Internet host, `ftp.natinst.com`, as anonymous and use your Internet address, such as `joesmith@anywhere.com`, as your password. The support files and documents are located in the `/support` directories.



Fax-on-Demand Support

Fax-on-Demand is a 24-hour information retrieval system containing a library of documents on a wide range of technical information. You can access Fax-on-Demand from a touch-tone telephone at (512) 418-1111.



E-Mail Support (currently U.S. only)

You can submit technical support questions to the applications engineering team through e-mail at the following Internet address. Remember to include your name, address, and phone number so we can contact you with solutions and suggestions.

support@natinst.com

Telephone and Fax Support

National Instruments has branch offices all over the world. Use the list below to find the technical support number for your country. If there is no National Instruments office in your country, contact the source from which you purchased your software to obtain support.



Telephone



Fax

Australia	02 9874 4100	02 9874 4455
Austria	0662 45 79 90 0	0662 45 79 90 19
Belgium	02 757 00 20	02 757 03 11
Canada (Ontario)	905 785 0085	905 785 0086
Canada (Quebec)	514 694 8521	514 694 4399
Denmark	45 76 26 00	45 76 26 02
Finland	09 527 2321	09 502 2930
France	01 48 14 24 24	01 48 14 24 14
Germany	089 741 31 30	089 714 60 35
Hong Kong	2645 3186	2686 8505
Israel	03 5734815	03 5734816
Italy	02 413091	02 41309215
Japan	03 5472 2970	03 5472 2977
Korea	02 596 7456	02 596 7455
Mexico	5 520 2635	5 520 3282
Netherlands	0348 433466	0348 430673
Norway	32 84 84 00	32 84 86 00
Singapore	2265886	2265887
Spain	91 640 0085	91 640 0533
Sweden	08 730 49 70	08 730 43 70
Switzerland	056 200 51 51	056 200 51 55
Taiwan	02 377 1200	02 737 4644
U.K.	01635 523545	01635 523154

Technical Support Form

Photocopy this form and update it each time you make changes to your software or hardware, and use the completed copy of this form as a reference for your current configuration. Completing this form accurately before contacting National Instruments for technical support helps our applications engineers answer your questions more efficiently.

If you are using any National Instruments hardware or software products related to this problem, include the configuration forms from their user manuals. Include additional pages if necessary.

Name _____

Title _____

Company _____

Address _____

Fax (____) _____ Phone (____) _____

Computer brand _____ Model _____ Processor _____

Operating system (include version number) _____

Clock Speed _____ MHz RAM _____ MB Display adapter _____

Mouse ____ yes ____ no Other adapters installed _____

Hard disk capacity _____ MB Brand _____

Instruments used _____

National Instruments hardware product model _____ Revision _____

Configuration _____

National Instruments software product _____ Version _____

Configuration _____

The problem is _____

List any error messages _____

The following steps will reproduce the problem _____

Hardware and Software Configuration Form

Record the settings and revisions of your hardware and software on the line to the right of each item. Complete a new copy of this form each time you revise your software or hardware configuration, and use this form as a reference for your current configuration. Completing this form accurately before contacting National Instruments for technical support helps our applications engineers answer your questions more efficiently.

National Instruments Products

GPIB Interface Type and Revision _____

GPIB Software for Windows 95 Version Number on Disk _____

Programming Language Interface Version _____

Diagnostic Utility Results _____

Other Products

Resources Summary Report from the Device Manager

To create this report, first display the **System Properties** dialog box for the computer by double-clicking on the **System** icon under **Start»Settings»Control Panel**. Then click on the **Device Manager** tab and highlight the **Computer** icon. Click on the **Print** button, and check the **Print to file** checkbox in the **Print** dialog box before clicking on **OK**.

Programming Environment Information

Programming Language _____

Compiler Vendor _____ Compiler Version _____

Application Information

DOS Application _____ Win16 Application _____ Win32 Application _____

If Win16 or Win32, method of accessing DLL (link with language interface or direct entry?)

Documentation Comment Form

National Instruments encourages you to comment on the documentation supplied with our products. This information helps us provide quality products to meet your needs.

Title: *Getting Started with Your Non Plug and Play GPIB Hardware and Software for Windows 95*

Edition Date: December 1996

Part Number: 321036C-01

Please comment on the completeness, clarity, and organization of the manual.

If you find errors in the manual, please record the page numbers and describe the errors.

Thank you for your help.

Name _____

Title _____

Company _____

Address _____

Phone (_____) _____

Mail to: Technical Publications
National Instruments Corporation
6504 Bridge Point Parkway
Austin, TX 78730-5039

Fax to: Technical Publications
National Instruments Corporation
(512) 794-5678

A graphic of a book with the word "Glossary" written on its cover, enclosed in a rectangular frame.

Glossary

Prefix	Meaning	Value
m-	milli-	10^{-3}
c-	centi-	10^{-2}
k-	kilo-	10^3
M-	mega-	10^6

° degrees

% percent

A amperes

AC alternating current

ANSI American National Standards Institute

ASIC application-specific integrated circuit

base I/O address lowest I/O address used by the GPIB hardware

C Celsius

CPU central processing unit

DIP dual inline package

DMA direct memory access

EISA Extended Industry Standard Architecture

Glossary

EMI	electromagnetic interference
FCC	Federal Communications Commission
GPIB	General Purpose Interface Bus
hex	hexadecimal
Hz	hertz
IEEE	Institute of Electrical and Electronic Engineers
in.	inches
I/O	input/output
IRQ	interrupt request
ISA	Industry Standard Architecture
KB	kilobytes of memory
legacy board	ISA board whose system resources are chosen by changing physical DIP switches or jumpers on the board
m	meters
MB	megabytes of memory
PC	personal computer
PnP	Plug and Play
RAM	random-access memory
resource	hardware settings used by devices in a computer system, including ISA interrupt request, DMA channel, and base I/O address
s	seconds
VDC	volts direct current